

Audio Towers

James Thomas Engineering Audio Towers provide high quality construction others only try to duplicate.



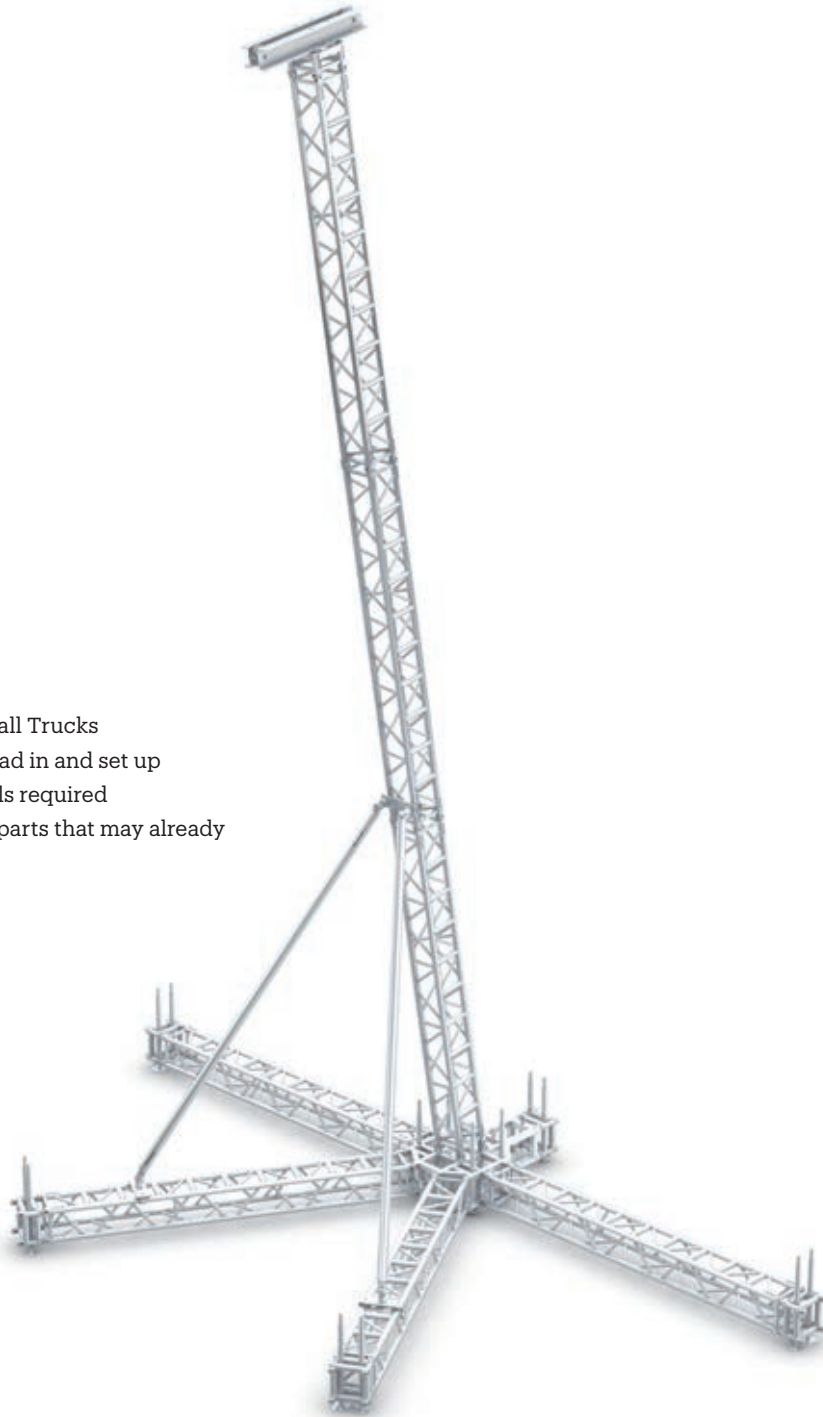


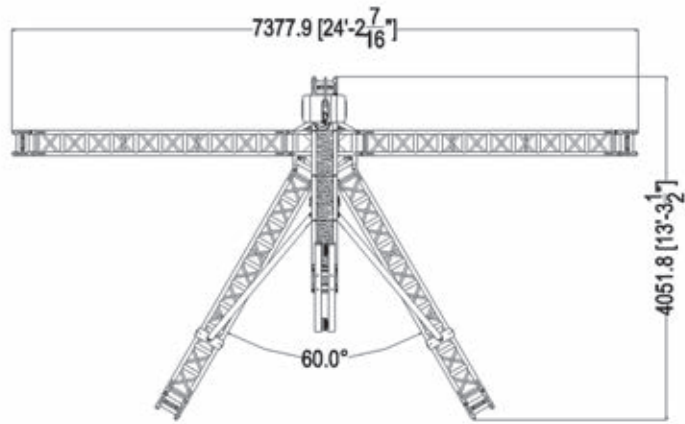
PLBR Roof System
with Sound Wings

MINI TAT

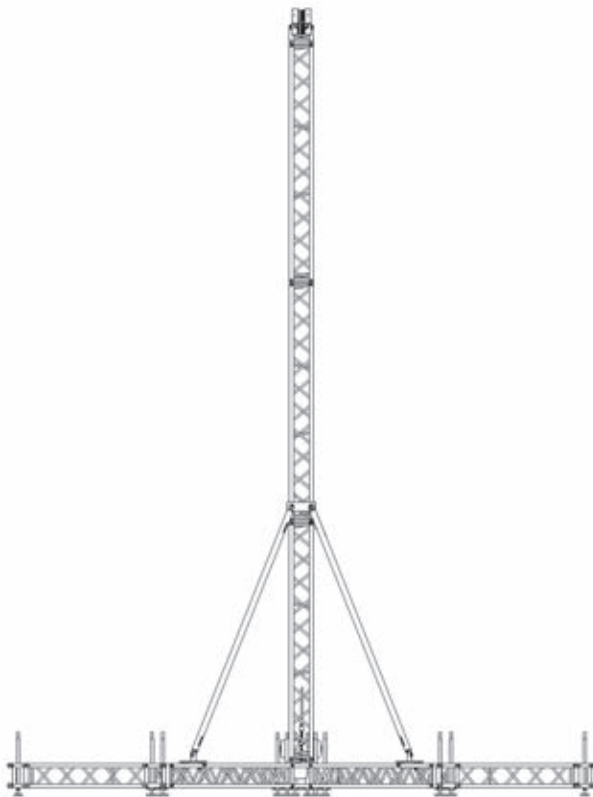
Following the success of the 20.5" TAT system, James Thomas Engineering introduces the Mini TAT. The Mini TAT is constructed with a 12" SuperTower. It can support loads of 1500 lbs at 30' and loads of 1850 lbs at 20'. Rear base legs are optional. This is a great addition for audio companies and rental houses. But don't let your imagination stop there! Audio isn't the only equipment the tower can support. The 12" version is designed with the smaller line array systems in mind.

- Easily Transported in Small Trucks
- Low user labor cost for load in and set up
- Minimum installation tools required
- Uses many JTE standard parts that may already be in your inventory

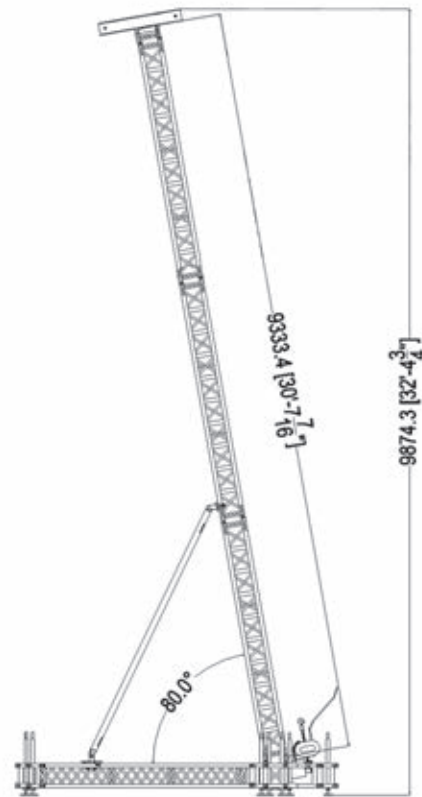




Plan View



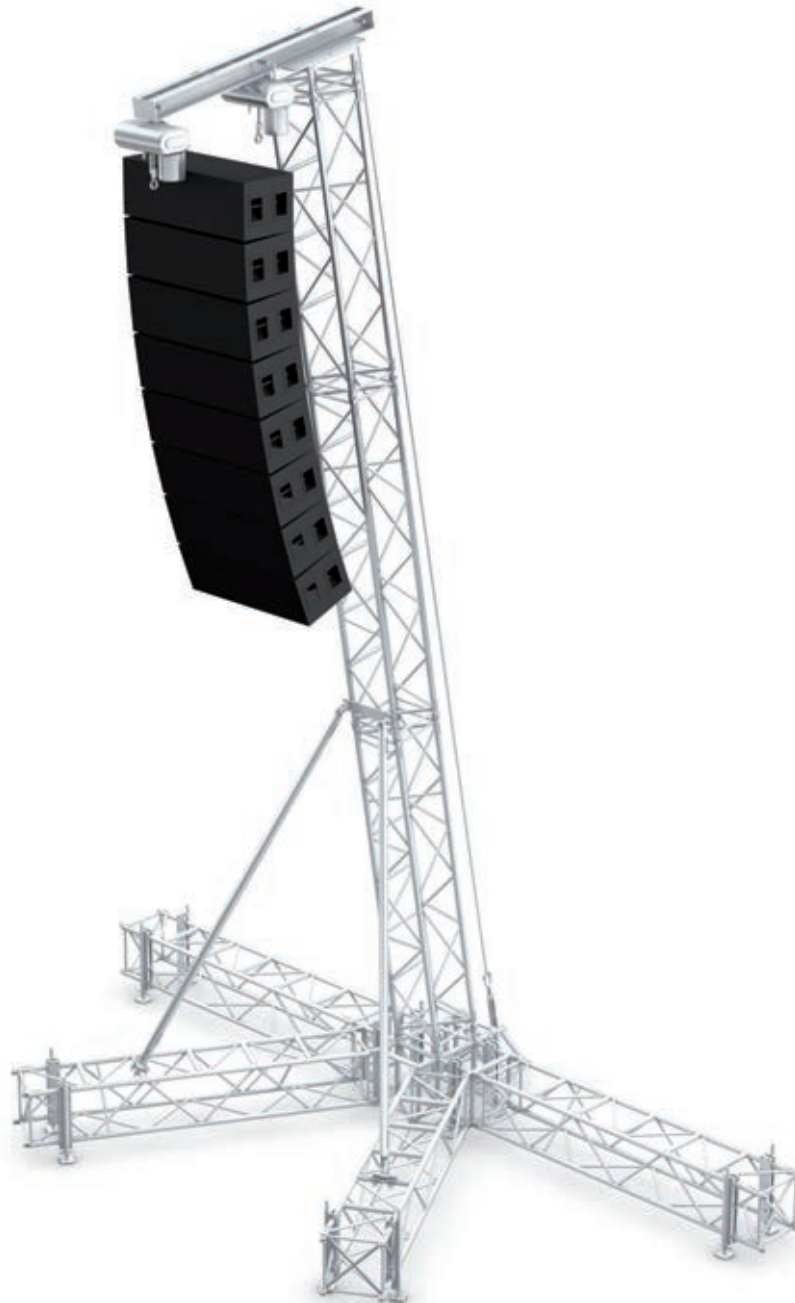
Front Elevation

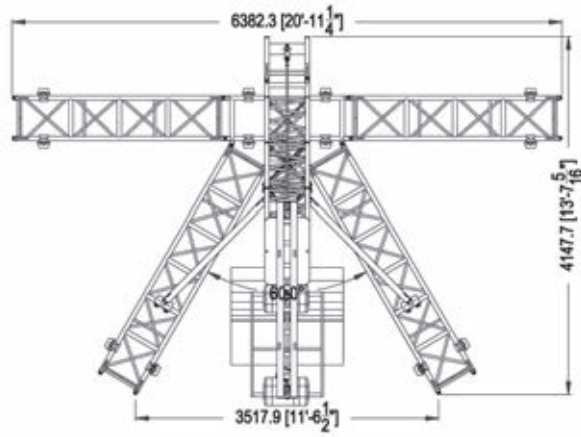


Side Elevation

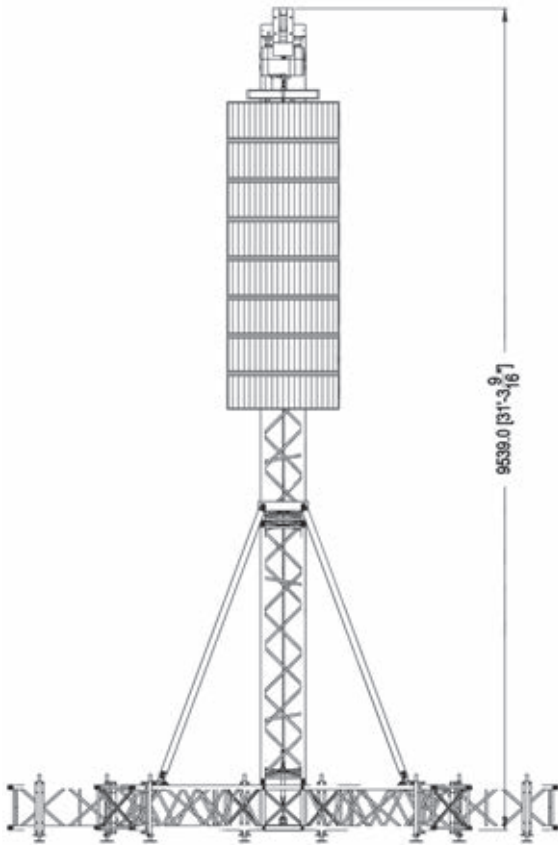
TAT

James Thomas Engineering continues their tradition of providing the highest quality, most reliable products with the TAT system. TAT is constructed with a 20.5" SuperTower and has a load limit of 2700 lbs. The TAT is also equipped with a base that can accept 2 additional sections of tower for added lateral stability or can be used in the traditional "V" configuration. All parts are constructed of high quality 6061T6 aluminum with the exception of the leveling jacks, which are made of steel.

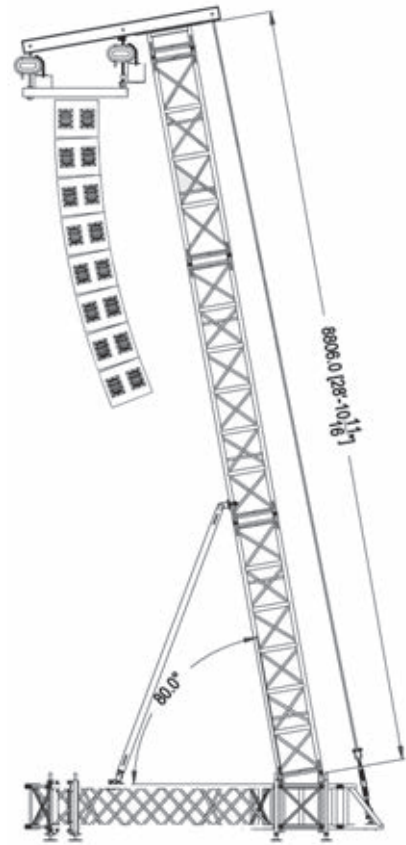




Plan View



Front Elevation



Side Elevation